



## Premium Jackup

### General Description

<b>Classification</b> .....	ABS, A1 Self-elevating Drilling Unit.
<b>Flag</b> .....	Marshal Islands.
<b>Overall Dimensions (Hull)</b> .....	243.1 ft. long x 206 ft. wide x 26 ft. deep.
<b>Legs</b> .....	3 x 343 ft. long, Square.
<b>Longitudinal Leg Center</b> .....	129 ft.
<b>Transverse Leg Center</b> .....	142 ft.
<b>Drafts*</b> .....	17 ft. load line draft
<b>Accommodation</b> .....	120 persons.
<b>Displacement*</b> .....	28,375 kips at load line
<b>Variable Deck Load*</b> .....	6,950 kips Drilling / 4,550 kips Afloat.
<b>Operating Water Depth</b> .....	200 ft – 330 ft (design).
<b>Maximum Drilling Depth</b> .....	30,000 ft.
<b>Cantilever Long. Skidding</b> .....	70' Aft of transom (Rack-Pinion).
<b>Drillfloor Trans. Skidding</b> .....	15' Port/ Stbd (Rack-Pinion).

### Drilling Equipment

<b>Derrick</b> .....	Pyramid 35' x 32' Base. 170' height. 1,500,000 lbs with 14 Lines.
<b>Top Drive</b> .....	750ST – 1150HP AC VFD Driven, 274 RPM Max Torque 66,000 ft-lbs @ 0-91RPM.
<b>Travelling Block</b> .....	750 ST, with 7 x 68" diameter sheaves.
<b>Crown Block</b> .....	Capacity: 750ST.
<b>Drawworks</b> .....	750ST on 14 x 1-3/4" lines, 3000 HP AC Vector Motors with 1.375-inch Drill Line.
<b>Rotary Table</b> .....	Rotary Table, 49-1/2", 750ST static.
<b>Offline Stand building</b> .....	309 stands DP and 10 stands 9-1/2" DC racking into Fingerboard.
<b>Iron Roughneck</b> .....	(1) 2-7/8"-10", 140,000 ft-lbs.
<b>Pipe Racker</b> .....	Vertical Pipe Racker with Max. Reach up to 4.6m.
<b>Hydraulic Catheads</b> .....	Catheads, torque 4,000 to 34,000 lbs line pull, 42" wire rope.
<b>Fingerboards</b> .....	30,000ft of standard drill pipe. 900 ft (10 stand) of 9-1/2" Drill Collar.

### Power & Machinery

<b>Main Power</b> .....	(5) CAT 3516C-HD 2150HP, 600V 1530KW Genset.
<b>Emergency Power</b> .....	(1) CAT 3512 1920HP, 480V 1310KW Genset.

### Special Features & Other Information

<b>Helideck</b> .....	S-61N, S-92, B-214. (D = 22.2m, MTOW = 12.6 MT).
<b>Jacking</b> .....	5 pinions per chord, 4 x chords per leg, 600 kips/pinion Normal holding capacity 371 kips/pinion Jacking capacity.

### Capacities

<b>Max Drilling Payload</b> .....	6,950 kips.
<b>Hook Load</b> .....	1.5M lbs.
<b>Rotary Load</b> .....	1.5M lbs.
<b>Setback Load</b> .....	750 kips.
<b>Liquid Mud</b> .....	4,090 bbls (operational).
<b>Sand Traps / Process tanks</b> .....	295 bbls.
<b>Pipe Storage (Main)</b> .....	800 kips.
<b>Pipe Storage (Cantilever)</b> .....	800 kips.
<b>Covered Sack Storage</b> .....	1,250 lbf/ft <sup>2</sup> .
<b>Bulk Cement</b> .....	5,250 cu.ft.
<b>Bulk Barite</b> .....	7,000 cu.ft.
<b>Potable Water</b> .....	2,529 bbls.
<b>Drill Water</b> .....	16,544 bbls (incl. combo tanks).
<b>Diesel Fuel</b> .....	4,031 bbls.
<b>Base Oil</b> .....	984 bbls.
<b>Brine</b> .....	984 bbls.

### BOP & Well Control

<b>BOP</b> .....	13-5/8" BOP Stack - (1) 10k Annular - (2) 13-5/8" 10k double
<b>Annular</b> .....	(1) 13-5/8" Annular 10k (1) 30" Annular 1,000psi (1) 21-1/4" Annular 2,000 psi
<b>Diverter</b> .....	Model Drill-Quip 500 psi, Big Bore
<b>Choke Manifold</b> .....	4-1/16" 10K psi with (2) hydraulic and (2) manual chokes with glycol injection
<b>Control Unit</b> .....	Cameron 3k psi BOP Control Unit, 84 bottles 15 gal. capacity with reservoir tank capacity 1,200gal.

### Mud System

<b>Mud Pumps</b> .....	(3) Triplex 9" liner / piston x 14" stroke, 7,500 psi, AC motors, 2 x 1,150 HP.
<b>Mud Pits</b> .....	Active Pits (8 Mud Pits, 1 Pre-Mix, 1 Slug)
<b>Shale Shakers</b> .....	(4) Shakers (1) Shaker with Mud Cleaner
<b>Desanders &amp; Desilters</b> .....	Part of Mud Cleaner.
<b>Degasser</b> .....	(1) Vacuum Degasser (1) Rig floor Degasser
<b>Mud System Pumps</b> .....	(4) Degasser / Desander / Desilter Pumps – 150hp (2) Trip Tank Pumps - 35hp

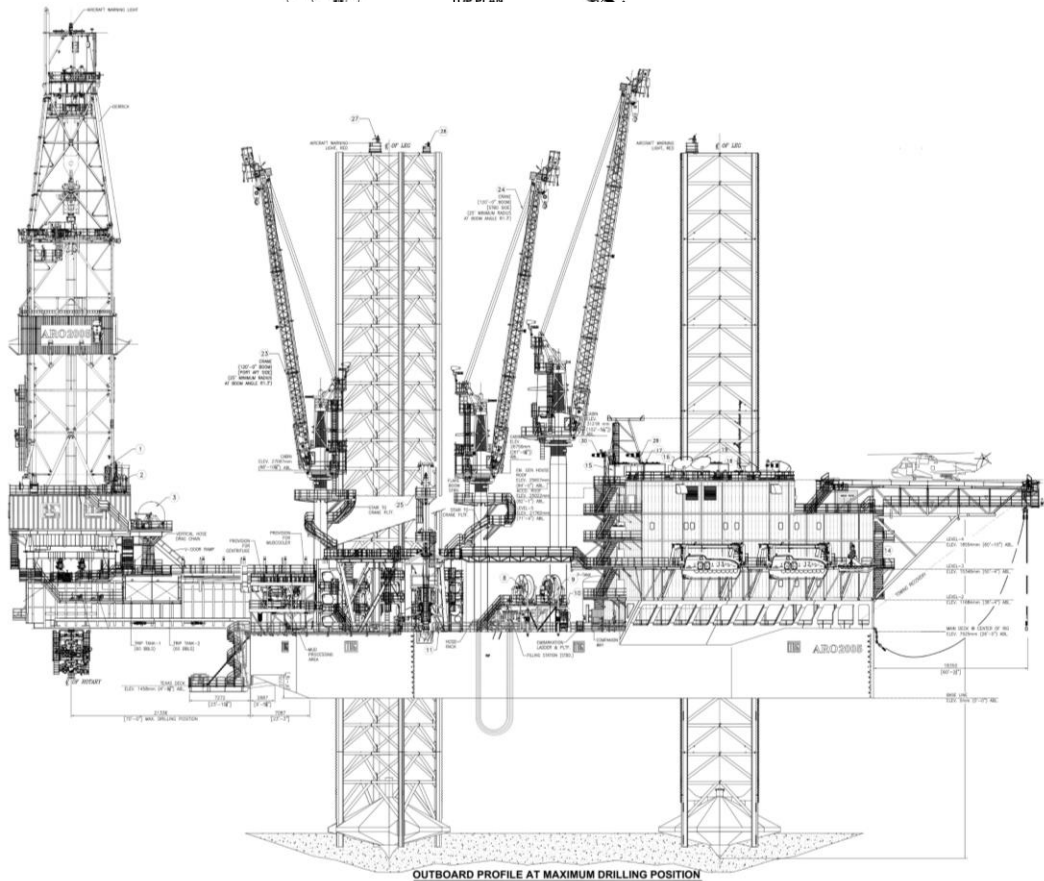
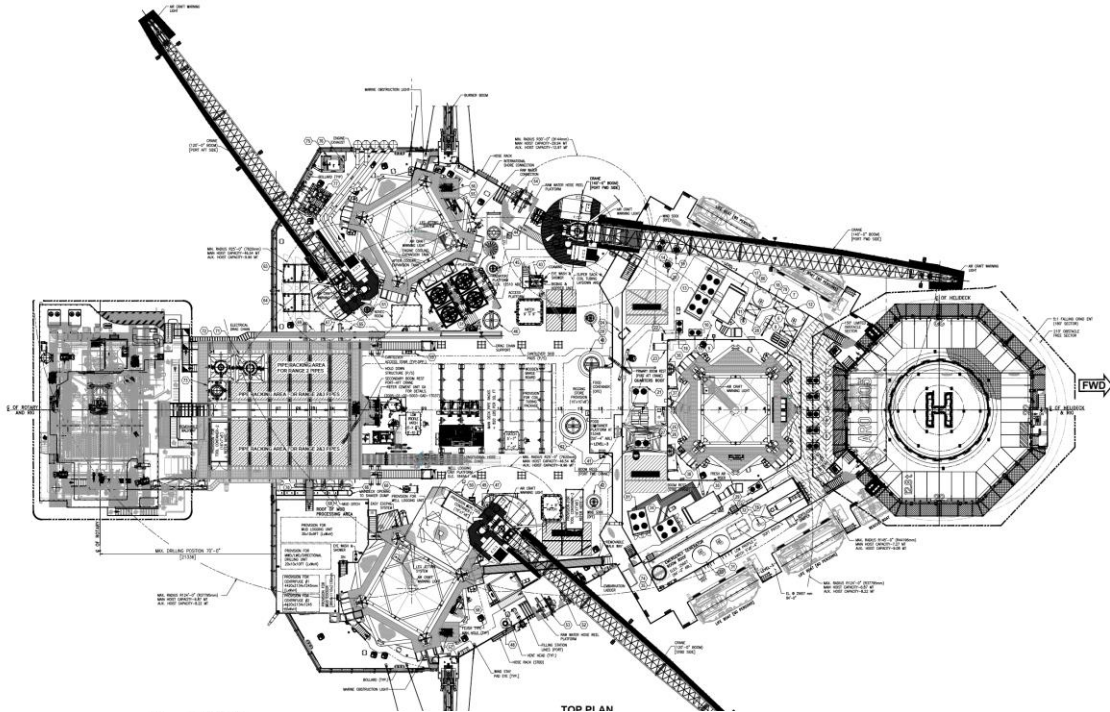
### Cranes

<b>Deck Cranes</b> .....	(3) SEATRAX Pedestal Cranes. - (1) x 75ST x 140' boom - (2) x 50ST x 120' boom
--------------------------	--

These specifications are intended for general reference purposes only, as actual equipment and specifications may vary based upon subsequent changes, the contract situation and customer needs. All equipment shall be operated and maintained at all times, in compliance with ARO Drilling standard operating manuals, policies and procedures, and within its stated operational limits or continuous rated capacity, in order to assure maximum operational efficiency.



## Premium Jackup



These specifications are intended for general reference purposes only, as actual equipment and specifications may vary based upon subsequent changes, the contract situation and customer needs. All equipment shall be operated and maintained at all times, in compliance with ARO Drilling standard operating manuals, policies and procedures, and within its stated operational limits or continuous rated capacity, in order to assure maximum operational efficiency.